



TRUE NORTH  
HOMES

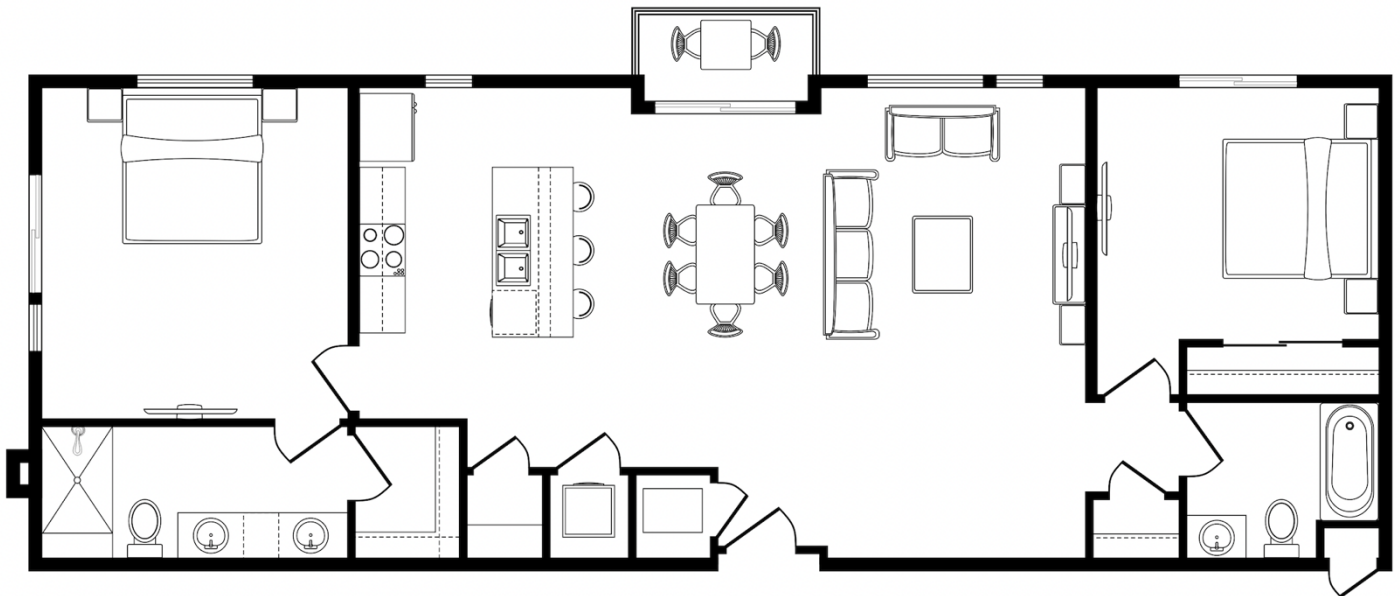
# East Grove

True. East Austin. Lifestyle.

BLD 1

Unit 1302

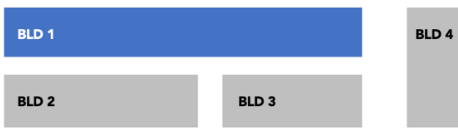
## Iconic II



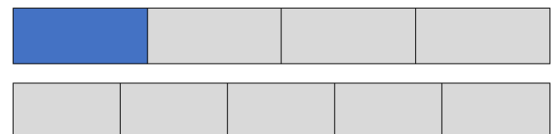
**Two Bedrooms – Two Bathrooms - Balcony**

**1,207 Square Feet interior space per plan**

**Includes one assigned parking space with storage closet**



**Building 1 – Level 3**  
**Home #1302**



Prices, plans and terms are effective on the date of publication and are subject to change without notice. Square footage is approximate per architectural plan and actual square footage may vary. Buyer should do his/her own evaluation of usable space available. Features and selections may vary and may not be included in purchase price.  
RTO 61522

