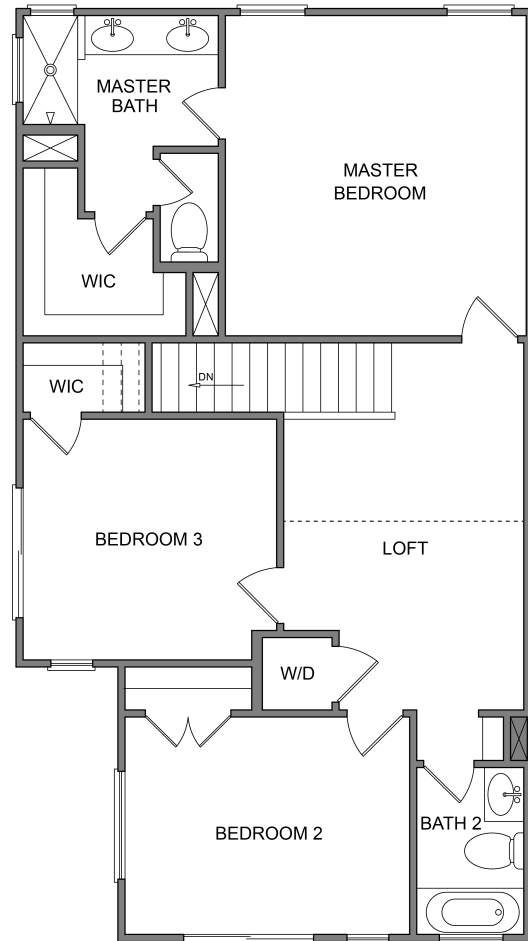
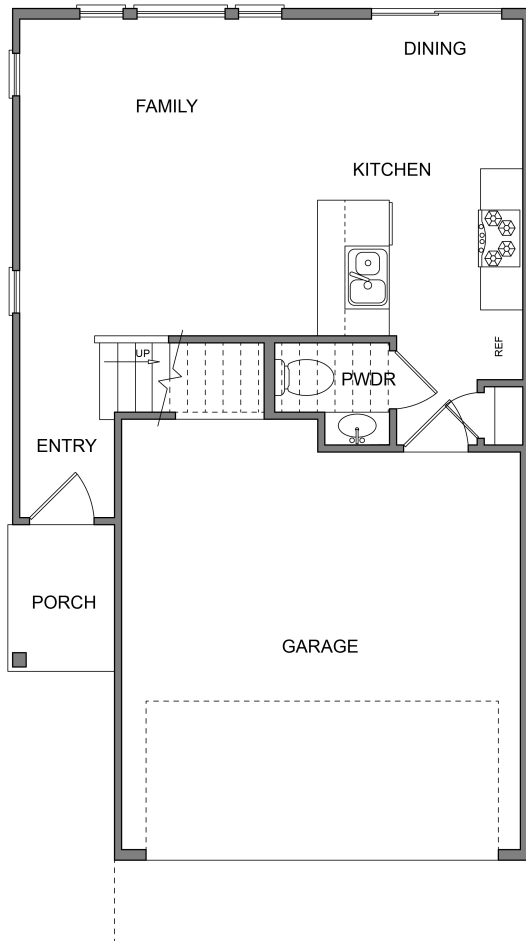




TRUE NORTH  
HOMES

# SKYLINE ON BERKMAN

## Central Austin Living



Corner Residences 1,6 & 10  
Interior Residences 4 & 8

Three bedrooms plus loft with innovative lightwell, two full baths, one half bath, attached two car private garage, common outdoor space.



Prices, plans and terms are effective on the date of publication and are subject to change without notice. Square footage is approximate per architectural plan and actual square footage might vary. Buyer should do his/her own evaluation of usable space available. Features and selections vary and may or may not be included in the purchase price. Plans to build out this neighborhood as proposed are subject to change without notice. RTO 180806

Skyline on Berkman – a True North Homes Development  
6409 Berkman Drive, Austin, TX 78723 – (512) 919-2975 - [info@mytruenorthhomes.com](mailto:info@mytruenorthhomes.com)